

ZF 63 A

8° Down angle, direct mount marine transmission.

Maximum rated input: 270kW (362hp)

Available for Pleasure, Light, Medium and Continuous Duty applications.

Description

- Reverse reduction marine transmission with hydraulically actuated multi-disc clutches .
- Suitable for high performance applications in luxury motoryachts, sport fishers, express cruisers etc .
- Robust design also withstands continuous duty in workboat applications .
- Fully works tested, reliable and simple to install .
- Design, manufacture and quality control standards comply with ISO 9001 .
- Compatible with all types of engines and propulsion systems, including waterjets and surface- piercing propellers, as applicable .

Features

- Lightweight and robust aluminum alloy casing (sea water resistant) .
- Case hardened and precisely ground gear teeth for long life and smooth running .
- Output shaft thrust bearing designed to take maximum propeller thrust astern and ahead .
- B/W connection integrated with casing .
- Smooth and reliable hydraulic shifting with control lever for attachment of push-pull cable .
- Suitable for twin engine installations (same torque capacity in ahead or astern mode. Reduction Ratios in ahead or astern are very close.) .
- Replaceable oil filter cartridge .
- Compact, space saving design due to 8° down-angle and beveloid gear principle .
- "SUPERSHIFT" clutch control .

Options

- Engine-matched dual stage coupling .
- SAE 3 and SAE 4 bell housings .
- Oil cooler complete with fittings and flexible oil hoses .
- Mounting brackets .
- Propeller shaft flange .
- Control cable bracket for mounting of push-pull cable to the control lever .
- Classification by all major Classification Societies on request .
- SAE «A» Power Take Off .
- Thermostatic valve for better performance of trolling valve in cold sea water .
- Trolling valve (mechanical) for slow-speed drive .
- Electric Trolling .
- Supershift E (with Autotroll and Easidock) .

Pleasure Duty

RATIOS		MAX. TORQUE		POWER/RPM		SAMPLE POWER CAPACITIES						MAX.
'A' Pos	'B' Pos	Nm	ftlb	kW	hp	2800 rpm		3300 rpm		3800 rpm		RPM
1.216	1.215	680	502	0.0712	0.0955	199	267	235	315	271	363	5500
1.563	1.583	680	502	0.0712	0.0955	199	267	235	315	271	363	5500
2.037	2.017	680	502	0.0712	0.0955	199	267	235	315	271	363	5500
2.682	2.709	595	439	0.0623	0.0836	174	234	206	276	237	317	5500
2.522	2.536	570	420	0.0597	0.0800	167	224	197	264	227	304	5500

Pleasure Duty Gasoline

RATIOS		MAX. TORQUE		POWER/RPM		SAMPLE POWER CAPACITIES						MAX.
'A' Pos	'B' Pos	Nm	ftlb	kW	hp	4000 rpm		4400 rpm		4800 rpm		RPM
1.216	1.215	680	502	0.0712	0.0955	285	382	313	420	342	458	5500
1.563	1.583	680	502	0.0712	0.0955	285	382	313	420	342	458	5500
2.037	2.017	680	502	0.0712	0.0955	285	382	313	420	342	458	5500
2.682	2.709	595	439	0.0623	0.0836	249	334	274	368	299	401	5500
2.522	2.536	570	420	0.0597	0.0800	239	320	263	352	286	384	5500

Light Duty

RATIOS		MAX. TORQUE		POWER/RPM		SAMPLE POWER CAPACITIES						MAX.
'A' Pos	'B' Pos	Nm	ftlb	kW	hp	2100 rpm		2500 rpm		2800 rpm		RPM
1.216	1.215	648	478	0.0679	0.0910	142	191	170	227	190	255	5500
1.563	1.583	648	478	0.0679	0.0910	142	191	170	227	190	255	5500
2.037	2.017	648	478	0.0679	0.0910	142	191	170	227	190	255	5500
2.522	2.536	532	392	0.0557	0.0747	117	157	139	187	156	209	5500
2.682	2.709	532	392	0.0557	0.0747	117	157	139	187	156	209	5500

Medium Duty

RATIOS		MAX. TORQUE		POWER/RPM		SAMPLE POWER CAPACITIES						MAX.
'A' Pos	'B' Pos	Nm	ftlb	kW	hp	2100 rpm		2500 rpm		2800 rpm		RPM
1.216	1.215	552	407	0.0578	0.0775	121	163	145	194	162	217	5500
1.563	1.583	515	380	0.0539	0.0723	113	152	135	181	151	202	5500
2.037	2.017	515	380	0.0539	0.0723	113	152	135	181	151	202	5500
2.522	2.536	454	335	0.0475	0.0638	100	134	119	159	133	179	5500
2.682	2.709	454	335	0.0475	0.0638	100	134	119	159	133	179	5500

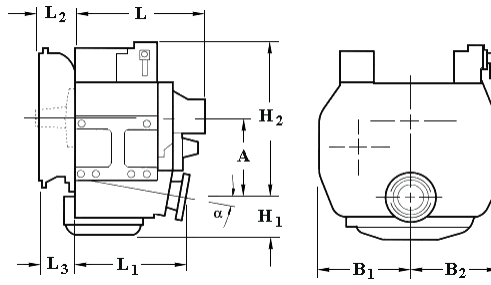
Continuous Duty

RATIOS		MAX. TORQUE		POWER/RPM		SAMPLE POWER CAPACITIES						MAX.
'A' Pos	'B' Pos	Nm	ftlb	kW	hp	1800 rpm		2100 rpm		2400 rpm		RPM
1.216	1.215	450	332	0.0471	0.0632	85	114	99	133	113	152	3200
1.563	1.583	423	312	0.0443	0.0594	80	107	93	125	106	143	3200
2.037	2.017	423	312	0.0443	0.0594	80	107	93	125	106	143	3200
2.522	2.536	370	273	0.0387	0.0520	70	94	81	109	93	125	3200
2.682	2.709	370	273	0.0387	0.0520	70	94	81	109	93	125	3200

"A" POS = continuous running position (normally AHEAD). "B" POS = reverse position. B/W = Borg Warner adaptor.

ZF 63 A

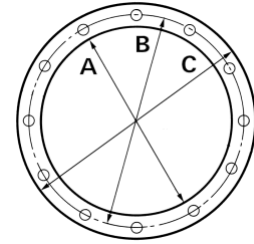
Dimensions



mm (inches)										
Angle	A	B ₁	B ₂	H ₁	H ₂	L	L ₁	L ₂	L ₃	Bell Hsg.
8.0	144 (5.67)	178 (6.99)	178 (6.99)	82.0 (3.23)	284 (11.2)	329 (13.0)	265 (10.4)	65.0 (2.56)	11.0 (0.43)	3
Weight kg (lb)						Oil Capacity Litre (US qt)				
44.0 (97.0)						4.00 (4.20)				

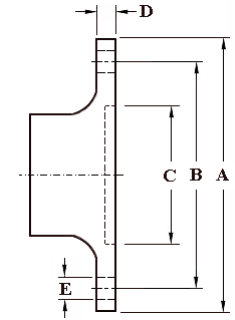
SAE Bell Housing Dimensions

SAE No.	A		B		C		Bolt Holes		
	mm	in	mm	in	mm	in	No.	Diameter	
	mm	in	mm	in	mm	in	No.	mm	in
3	409.58	16.125	428.63	16.875	450.85	17.75	12	10.32	13/32
4	361.95	14.25	381.0	15.0	403.23	15.875	12	10.32	13/32



Output Coupling Dimensions

A		B		C		D		Bolt Holes		
mm	in	mm	in	mm	in	mm	in	No.	Diameter (E)	
mm	in	mm	in	mm	in	mm	in	No.	mm	in
133	5.24	108	4.25	63.5	2.50	9.50	0.37	4	11.5	0.45



Duty Definitions

PLEASURE DUTY DEFINITION	Highly intermittent operation with very large variations in engine speed and power
Average engine operating hours limit:	500 hours/year 300 hours/year for mechanical gearboxes
Typical hull forms:	Planing.
Typical applications:	Private, non-commercial, non-charter sport/leisure activities.
LIGHT DUTY DEFINITION	Intermittent operation with large variations in engine speed and power
Average engine operating hours limit:	2500 hours/year (for hydraulic gearboxes smaller than the ZF 650 series, 2000 hours/year).
Typical hull forms:	Planing and semi-displacement.
Typical applications:	Private and charter, sport/leisure activities, naval and police activities.
MEDIUM DUTY DEFINITION	Intermittent operation with some variations in engine speed and power
Average engine operating hours limit:	4000 hours/year. 3500 hours/year for gearboxes smaller than ZF 2000 series and workboat ZF W2700 series.
Typical hull forms:	Semi-displacement and displacement
Typical applications:	Charter and commercial craft (example: crew boats and fast ferries), and naval and police activities.
CONTINUOUS DUTY DEFINITION	Continuous operation with little or no variations in engine speed and power
Average engine operating hours limit:	Unlimited
Typical hull forms:	Displacement.
Typical applications:	Heavy duty commercial vessels, tugs, fishing boats.

Duty Ratings

Ratings apply to marine diesel engines at the indicated speeds. At other engine speeds, the respective power capacity (kW) of the transmission can be obtained by multiplying the Power/Speed ratio by the speed.

Approximate conversion factors:

1 kW = 1.36 metric hp

1 kW = 1.34 U.S. hp (SAE)

1 U.S. hp = 1.014 metric hp

1 Nm = 0.74 lb.ft.

Ratings apply to right hand turning engines, i.e. engines having counterclockwise rotating flywheels when viewing the flywheel end of the engine. These ratings allow full power through forward and reverse gear trains, unless otherwise stated.

Contact your nearest ZF Sales and Service office for ratings applicable to gas turbines, gasoline (petrol) engines, as well as left hand turning engines, and marine transmissions for large horsepower capacity engines.

Ratings apply to marine transmissions currently in production or in development and are subject to change without prior notice.

Safe Operating Notice

The safe operation of ZF products depends upon adherence to technical data presented in our brochures. Safe operation also depends upon proper installation, operation and routine maintenance and inspection under prevailing conditions and recommendations set forth by ZF. Damage to transmission caused by repeated or continuous emergency manoeuvres or abnormal operation is not covered under warranty. It is the responsibility of users and not ZF to provide and install guards and safety devices, which may be required by recognized safety standards of the respective country (e.g. for U.S.A. the Occupational Safety Act of 1970 and its subsequent provisions).

Monitoring Notice

The safe operation of ZF products depends upon adherence to ZF monitoring recommendations presented in our operating manuals, etc. It is the responsibility of users and not ZF to provide and install monitoring devices and safety interlock systems as may be deemed prudent by ZF. Consult ZF for details and recommendations.

Torsional Responsibility and Torsional Couplings

The responsibility for ensuring torsional compatibility rests with the assembler of the drive and driven equipment. ZF can accept no liability for gearbox noise caused by vibrations or for damage to the gearbox, the flexible coupling or to other parts of the drive unit caused by this kind of vibration. Contact ZF for further information and assistance. ZF recommends the use of a torsional limit stop for single engine powered boats, wherein loss of propulsion power can result in loss of control. It is the buyer's responsibility to specify this option, which can result in additional cost and a possible increase in installation length.

ZF can accept no liability for personal injury, loss of life, or damage or loss of property due to the failure of the buyer to specify a torsional limit stop. ZF selects torsional couplings on the basis of nominal input torque ratings and commonly accepted rated engine governed speeds. Consult ZF for details concerning speed limits of standard offering torsional couplings, which can be less than the transmission limit. Special torsional couplings may be required for Survey Society Ice Classification requirements.

