



Suzuki Control Boxes

Suzuki offers Single Binnacle Control Boxes for your single Suzuki outboard application, or choose a Dual Binnacle Control Box to manage two Suzuki outboards masterfully. Suzuki Genuine Control Boxes define accuracy, user-friendliness and durability.



Single Binnacle Control Box Kit

Single Binnacle Control Box uses a convenient thumb-operated power trim and tilt switch, push-button shifting disengagement for faster warm ups and built-in neutral safety switch. Kit includes items listed. *Main Wiring Harness must be ordered separately, see below.



- 67000-93J05** Single Binnacle Control Box Kit - includes:
- 37100-96J24** Ignition Switch Panel with Emergency Stop and Warning Buzzer Assembly
- 67200-93J13** Single Binnacle Control Box Assembly

Dual Binnacle Control Box Kit

Dual Binnacle Control Box includes the same features as the Single Binnacle Control Box, plus a unique base mounted PTT system allowing you to trim the motors individually then adjust them together for maximum performance. Kit includes items listed. *Main Wiring Harness must be ordered separately, see below.



- 67000-93J15*** Dual Binnacle Control Box Kit - Includes:
- 37100-96J14** Dual Ignition Switch with Emergency Stop
- 38500-92X50** Warning Buzzers (2)
- 67200-93J23** Dual Binnacle Control Box Assembly



Replacement Control Boxes

- 67200-93J13** Single Binnacle Control Box '05 - Current
- 67200-93J23** Dual Binnacle Control Box '05 - Current
- 67200-93J32** Flush Mount Control Box '05 - Current



**Flush Mount
Binnacle Control
Box Kit**

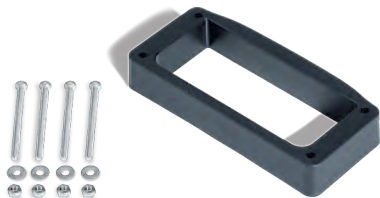
Suzuki's top quality Flush Mount Control Box features include a smooth action, thumb control power trim and tilt switch, a push button to disengage the shifting for faster warm-ups and a built in neutral safety switch. Reversible for left hand installations. Kit includes items listed.

*Main Wiring Harness must be ordered separately, see below.

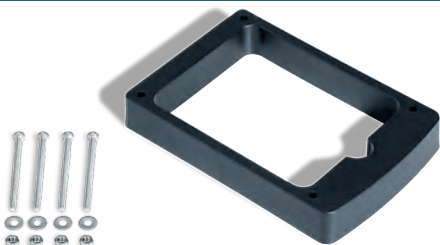
67000-93J26*	Flush Mount Binnacle Control Box Kit - Includes:
37100-96J24	Ignition Switch Panel with Emergency Stop and Warning Buzzer Assembly
67200-93J32	Flush Mount Control Box

Miscellaneous Components

38500-92X50	Warning Buzzer. Replacement for DF models.
36620-93J20	Control Box Adaptor Harness. Adapts 2005+ model control box with square connector to 2004 and earlier motors with round connector.
36620-93J30	Control Box Adaptor Harness. Adapts 2005+ model engine with square connector to 2004 and earlier harness with round connector.



67500-93J00 Single Binnacle Control Box Spacer



67500-93J10 Dual Binnacle Control Box Spacer



Side Mount Control Box Kits

Side Mount Control Boxes can be tailored to your needs. Standard features include a fast idle lever for easy warm-ups, a key-type ignition switch, and an emergency stop switch. *Main Wiring Harness must be ordered separately, see below.

67200-91J20	DF4/6	'03 - '10
67200-89E35	DF9.9/15	'97 - '04
67200-94J20	DF9.9/15	'05 - '10
	DF8A/9.9A	'10 - Current
	DF25 V-Twin	'06 - Current
	DF25A/30A (W/O PT or PTT)	'14 - Current
67200-99E56	DF25/30 (W+W/O PT)	'00 - '04
67200-94J20	DF25/30	'05 - '08
67200-99E56	DF40/50	'99 - '04
	DF60/70	'98 - '04
67200-93J50	DF25A/30A (With PT or PTT)	'14 - Current
	DF40/50	'05 - '10
	DF40A/50A/50AV/60A/60AV	'10 - Current
	DF60/70	'05 - '10
	DF70A/90A	'10 - Current
	DF90/115/140	'05 - Current
	DF150/175/200A	'06 - Current
	DF200/225/250	'05 - Current

Wiring Harnesses

Analog Wiring Harnesses.

36620-94J01	21' Wiring Harness (NON PT or PTT)
36620-93J52	16' Wiring Harness (PT or PTT)
36620-93J02	21' Wiring Harness (PT or PTT)
36620-93J62	26' Wiring Harness (PT or PTT)

